

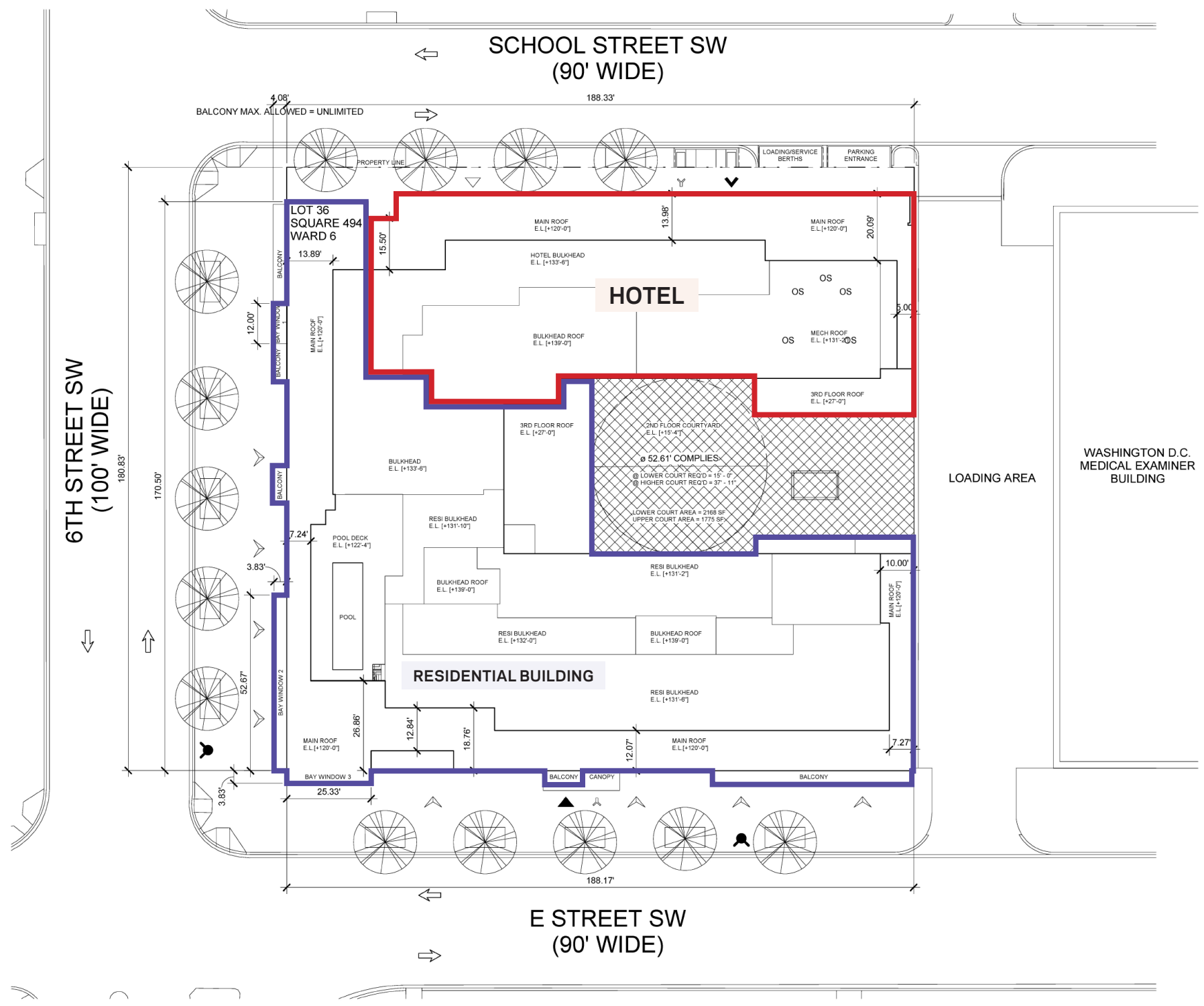


550 School Street SW (Square 494, Lot 36)

Application to Board of Zoning Adjustment







- RESIDENTIAL ENTRANCE
- RETAIL ENTRANCE
- HOTEL ENTRANCE
- BOH ENTRANCE
- TRAFFIC DIRECTION
- PROPOSED TREES
- HYDRANT
- FIRE DEPT CONNECTION
- ZONING LOT BOUNDARY
- REQUIRED SETBACK



2. 6th Street SW and School Street SW



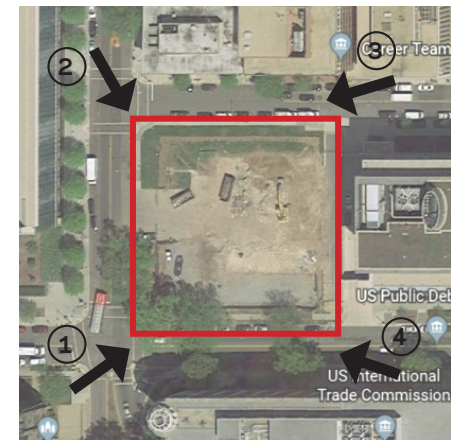
3. School Street SW



1. 6th Street SW and E Street SW



4. E Street SW





1. 6th Street SW and E Street SW



2. 6th Street SW and School Street SW



3. School Street SW



